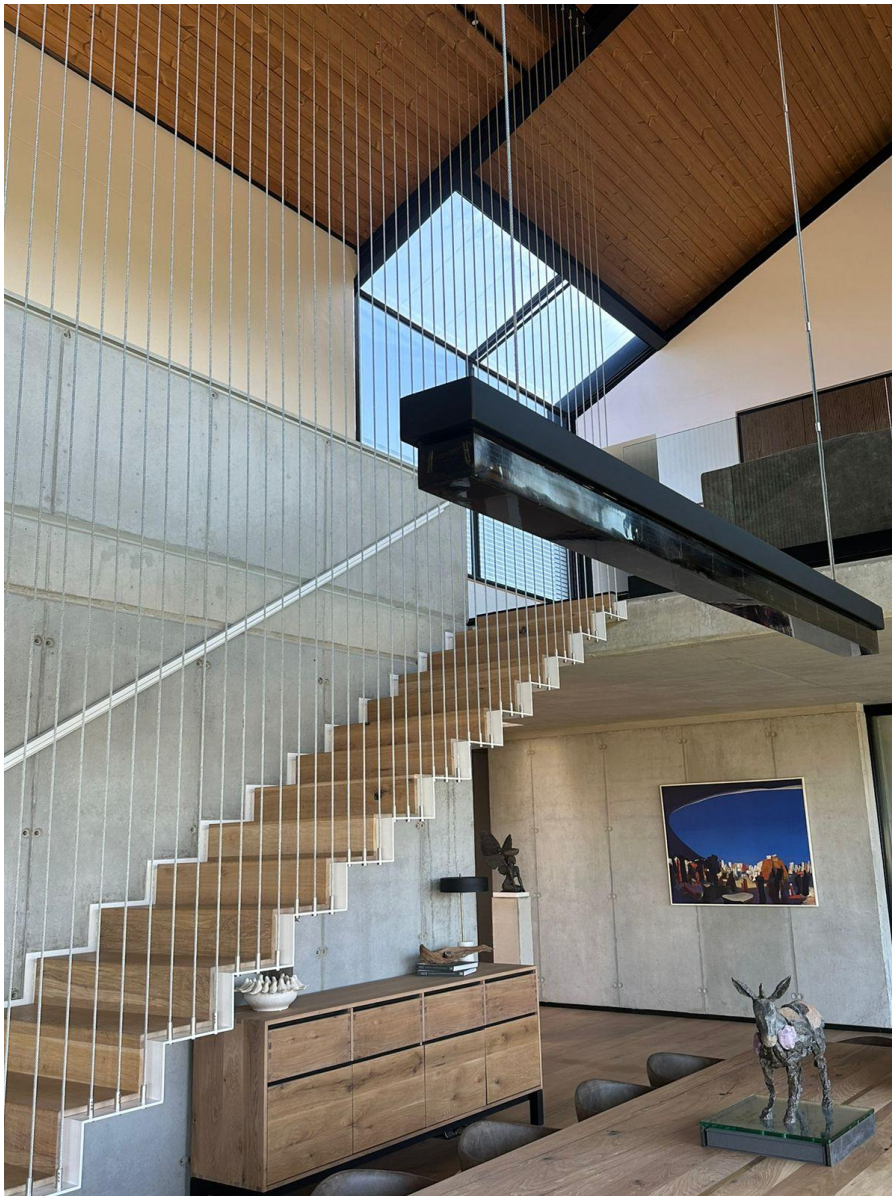


GREENE



consulting engineers

PROFILE - ENTERTAINMENT, HOSPITALITY AND LUXURY RESIDENTIAL



info@greenegroup.co.za

www.greenegroup.co.za

Tel: +27 12 658 0423

Contact Person: Johann Watermeyer

Mobile: +27 82 576 5183

Bondev Office Park, Block D
Cnr Willem Botha Str & Wierda Rd
Eldoraigne, Centurion, Gauteng
South Africa

BACKGROUND

Greene Consulting Engineers (Pty) Ltd (Greene) was founded in 2009 with years of experience in the provision of consulting civil and structural engineering and project management services to provide tailor made engineering and project management solutions to both the private and public sectors.

We are committed to deliver cost effective solutions fit for purpose designs across individual and multiple project life cycles that include concept and feasibility studies, design, procurement and construction management processes. We are professional, transparent and ethical in our approach.

Greene is rendering services to clients in South Africa and have completed projects in several other African countries including Mozambique, Zimbabwe, Botswana, Kingdom of Eswatini, Tanzania, Uganda, Angola, Nigeria, Zambia, Ghana, Somaliland, Liberia, Kenya, Guinea.

Greene has also completed international projects in other countries including Saudi Arabia, India, South Korea, Thailand, Japan, China, and Australia.

COMPANY DETAILS

Johann Watermeyer	Mark Manthe	Floris Jordaan
Managing Director	Director	Director
Pr Eng, B Eng (Civil) Pr CPM	Pr Tech Eng, (Structural) (Msaice)	Pr Eng (Civil) BSc Hons (Structural)

Larry Nell	Jane van der Linde
Associate	Associate
Pr Eng B.Eng (Hons) Structural	Pr Eng B.Eng Civil Engineering

Greene consists of the following divisions:

- Project Management
- Civil Engineering
- Structural Engineering
- Quantity Surveying
- Electrical Engineering

ECSA REGISTRATION

Greene has registered a commitment and undertaking (CU2012003C) in respect of civil candidate engineers and established a mentorship scheme in accordance with ECSA's training requirements. Greene has several engineers that have Professional Registrations through ECSA (Engineering Council of South Africa).

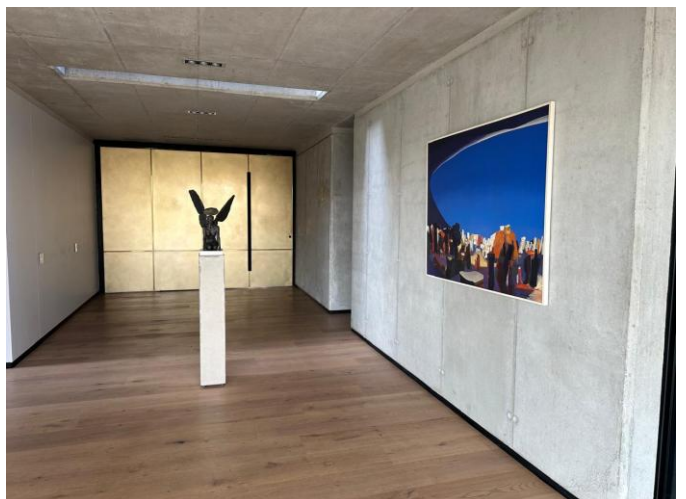
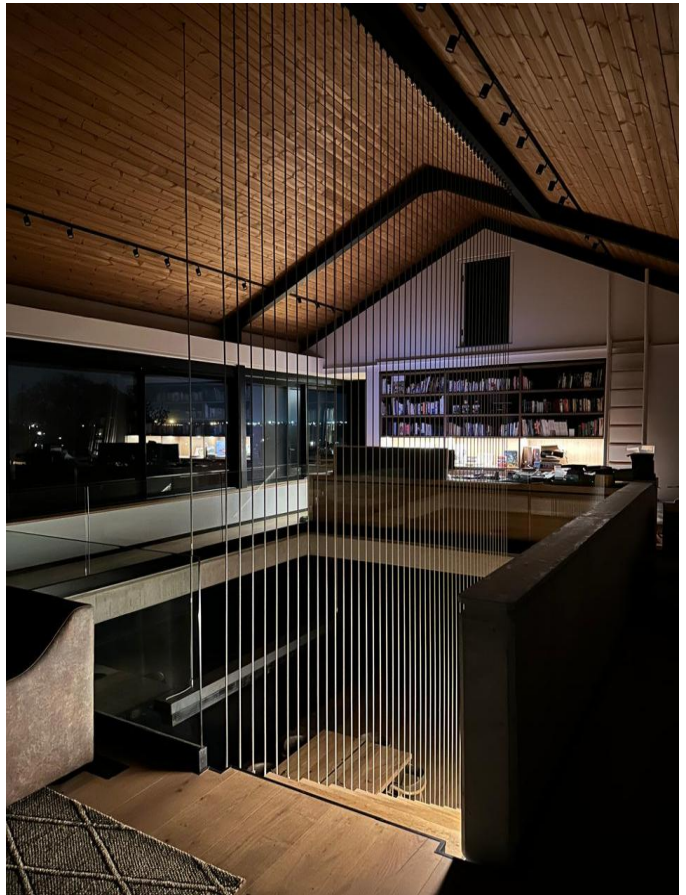
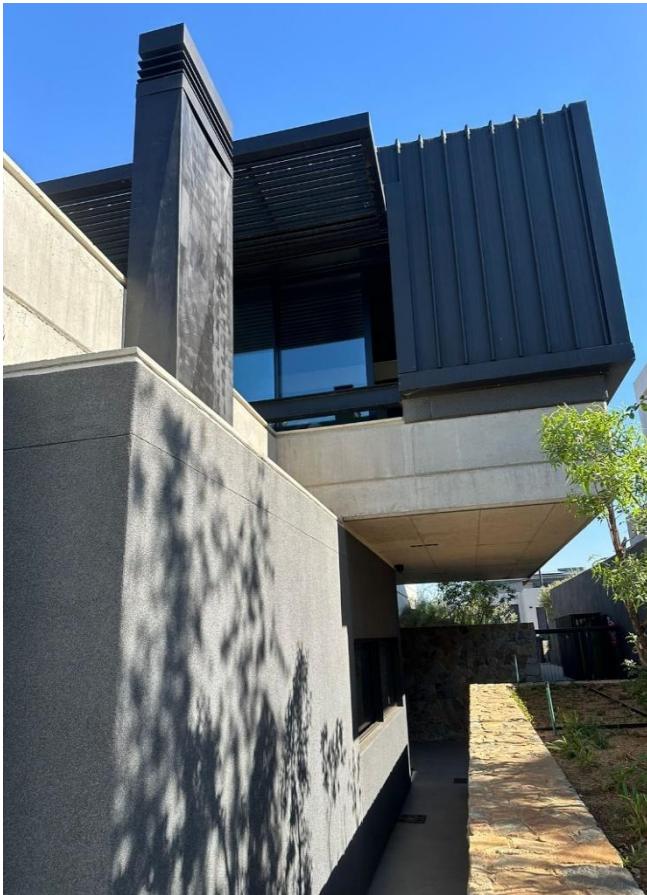
“Our company is small enough to be flexible, yet large enough to be reliable”

LUXURY RESIDENTIAL DEVELOPMENTS

Greene has been involved in several projects in the residential development sector. Developments range from low-end to high-end residential developments. High end developments include upmarket houses completed in prestigious estates such as Val de Vie in Stellenbosch. Upmarket houses require unmatched quality design work including specifications to become a success. That is exactly what Greene has provided for these projects we were involved in.

MIDSTREAM HOUSE

Greene Consulting Engineers were the appointed Civil Engineers and the Structural Engineers on this project. This upmarket house featured an array of complex structural elements that included large cantilever slabs, suspended elements and structural steelwork. Special smooth shutter finishes on all concrete work required good designs to ensure no cracks were visible. Innovated design approaches to the first-floor slab design as adopted as well as for other key structures such as staircases. The roof slab was also used as a garden for indigenous plants and served to catch rainwater to distribute it to storage tanks for irrigation and to fill the reflection pond levels. Additional sustainable measures include the addition of solar panels on the roof of the structure.





LUXURIOUS LODGE (NDA)

Greene Consulting Engineers were the appointed Civil Engineers and the Structural Engineers on this project. This luxurious lodge featured several different accommodation units and a spa. Structural elements included cantilever slabs, and a lot of structural steelworks that works as aesthetic features. Complex design work was required to accommodate the natural aesthetic look of the facility to match the natural surroundings. The units each have provision for solar panels to be more sustainable.



HOSPITALITY AND ENTERTAINMENT SECTOR

Greene has been involved in several projects in the hospitality and entertainment sector. Projects include works done on well-known hotels in South Africa, and in Africa. Due to the nature of the work Greene has signed Non-Disclosure Agreements on these projects. The projects include new accommodation blocks, new spa facilities, new entertainment areas with terraces, swimming pools, up-market lounges and bars.

Greene has designed several sustainable measures to improve the green rating of the projects. Sustainable measures included the design of louvres to support solar panels to ensure a maximum number of solar panels could be installed on the side of a building. Sustainable measures also included designing a full-bore system to catch rainwater so that it could be recycled for irrigation, reducing the water usage. A project that is currently underway involves the restoration of a facility with a hotel, spa and a golf course that is being rebranded as and the identity changed. Greene has also been involved with designs for squash courts as well as padel courts with enclosed roofs.

PROJECT A (NDA) – HOTEL, GOLF AND SPA

Greene Consulting Engineers were the appointed Civil Engineers and the Structural Engineers on this project. This project included the rebranding and change of identity of a well-known hotel close to the Kruger National Park in South Africa. The facility has a hotel, spa facilities as well as a golf course. The rehabilitation of the golf course was a priority and Greene had to provide solutions to ensure that water services could reach the golf course to provide irrigation. Services had to conform to strict environmental requirements due to the location of the facility. The spa facilities were to be upgraded to be more luxurious. Additional keys were required with the addition of new accommodation buildings and by altering existing structures. The signature feature of this project is the new state-of-the-art golf clubhouse which serves as a center for functions, has members-only lounges and will have slot machines. The facility will also have indoor padel courts with a restaurant and bar including kids' entertainment areas.

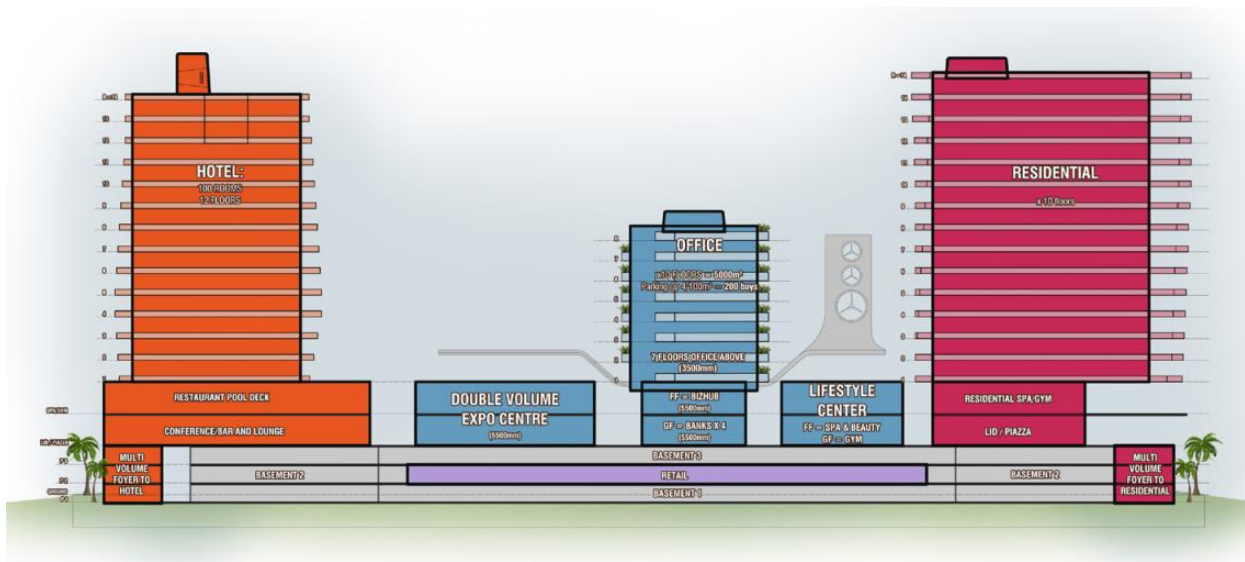




PROJECT B (NDA) – MOZAMBIQUE HOTEL, RESIDENTIAL, OFFICE, LIFESTYLE AND MEDICAL

Greene Consulting Engineers were the appointed Civil Engineers and Structural Engineers to conduct feasibility studies on a new development in Mozambique. The project is currently in its early phase. The 4-Star Business Hotel is designed with a focus on the LNG developments and industries in Mozambique. The development will have a 200-key Hotel, a 100-bed Medical Centre with Offices and a Residential component.

The development will also have a large entertainment sector. This will include a restaurant, pool deck, with a bar and lounge at the hotel. A double-volume expo center will also be utilized for events. There will also be a lifestyle center in the development with a focus on healthy living. This will feature a spa and beauty salon as well as a gym.





PROJECT C (NDA) – ICONIC HOTEL

Greene Consulting Engineers were the appointed Structural Engineers on this project. This project included the rebranding and change of identity of a well-known hotel in the well-known tourist destination of Cape Town in South Africa. The project consisted of designing new structural elements so that the look and feel of the hotel could change. This included new roofing solutions, new facades, new balconies, and renovated swimming pool areas with lounges and bars. Room units were altered and changed the loading points on the existing post-tension slab. The slab was analyzed to ensure the existing structural elements could operate within capacity under the new loading conditions. The new desired looks of the iconic areas of the hotel required out-of-the-box thinking and required complex design work to achieve the new aesthetic. To provide additional access a new lift was also proposed, which would be an additional feature of the new identity.

